

## Who Should Have Naloxone?

Anyone at risk of opioid overdose or mixing opioids with alcohol or other medications that slow breathing (benzodiazepines, anti-depressants, methadone, buprenorphine).

Anyone with a history of substance use disorders, nonmedical opioid use or emergency care involving opioid intoxication.

## How does Naloxone Work?

Naloxone is an “opioid antagonist” which means it works by pushing opioids out of the brain’s receptors for opioid. This reverses the overdose without affecting the rest of the body.

## What are the Side Effects of Naloxone?

Naloxone is considered safe with side effects unlikely and limited to:

- Chest pain
- Fast or irregular heartbeat
- Flushing
- Irritability
- Nausea
- Dry cough
- Wheezing

## Common Opioids

GENERIC NAME	BRAND NAME
Hydrocodone	Vicodin, Lortab, Norco
Oxycodone	Percocet, OxyContin, Percodan
Morphine	MSContin, Kadian, Avinza
Codeine	Tylenol with Codeine, Tylenol #3
Fentanyl	Duragesic
Hydromorphone	Dilaudid
Oxymorphone	Opana
Meperidine	Demerol
Methadone	Dolophine, Methadose
Buprenorphine	Suboxone, Subutex, Zubsolv, Butrans

*Heroin is also an opioid*

**For patient education, videos and additional materials, please visit**  
[www.prescribetoprevent.org](http://www.prescribetoprevent.org)

## Opioid Safety & Naloxone Use



## A Guide for Patients & Caregivers

# What is an Opioid Overdose?

Taking too much of any opioid can cause breathing to slow or stop.

## How to identify an opioid overdose:

- The person will not wake up
- Breathing slows or stops
- Lips and fingernails turn blue/grey
- Skin get pale & clammy

## In Case of Overdose:

### 1. Call 911 & Give Naloxone

If no reaction in 3 minutes, give second naloxone dose

### 2. Do rescue breathing or chest compressions

Follow 911 dispatcher instructions

### 3. Stay

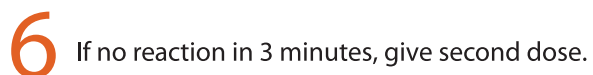
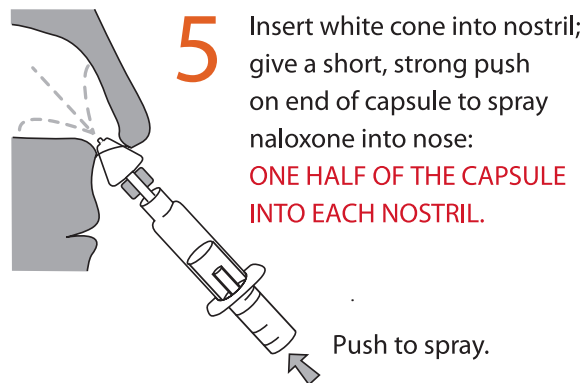
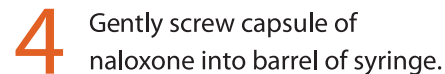
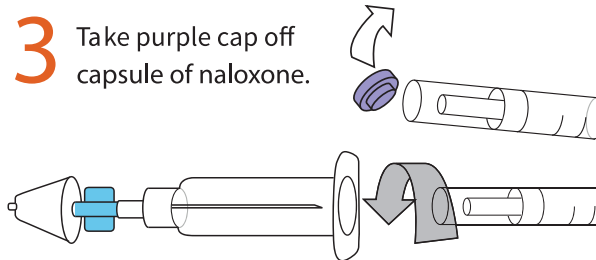
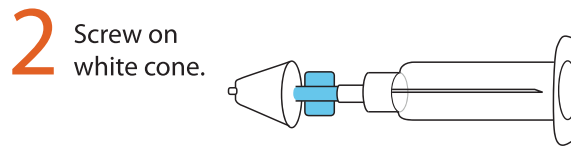
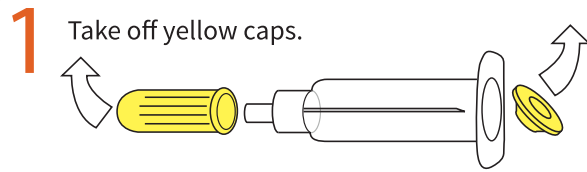
with the person for at least 3 hours following naloxone administration or until help arrives

## QUESTIONS?

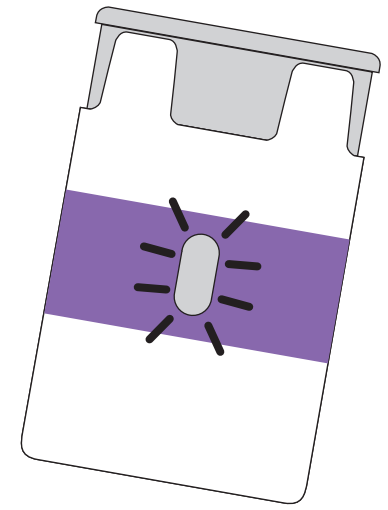
Talk to your pharmacist or physician

# How to Give Naloxone

## NASAL SPRAY



## AUTO-INJECTOR



The auto-injector is easy to use and provides a speaker with step-by-step instructions to inject naloxone on the outer thigh, through clothing if needed.

## TO AVOID AN ACCIDENTAL OPIOID OVERDOSE:

- Try not to mix your opioids with alcohol, benzodiazepines (Xanax, Ativan, Klonopin, Valium), or medicines that make you sleepy.
- Be extra careful if you miss or change doses, feel ill, or start new medications.